



MAVISTON

MAI KHAO

THE TRUE BEACHFRONT EXPERIENCE



MAVISTON  
MAI KHAO

# PROJECT OVERVIEW

The Maviston Mai Khao project is a unique mixed-use development located on one of Phuket's most beautiful beaches, Mai Khao Beach.

Spanning a total area of 88,000 square meters, the project features a beachfront that stretches nearly 600 meters. Such a distinctive development has never been seen before in Phuket and is unlikely to be replicated in the future.

The development boasts a 5-star hotel standard units with many facilities such as beachfront restaurant, grocery shop, kid club and many more.







55 Rais

Anantara Villas

JW Marriott

Project Area  
**88,000** sq.m.  
or 55 Rai

Beach Frontage  
is about  
**600** meters

Include green area  
approximately:  
**32,000** sq.m.

And an area without  
buildings over  
**70%**

# FACILITIES



Spa



Kid Club



Grocery Shop



Common Pool



Beach Front Restaurant

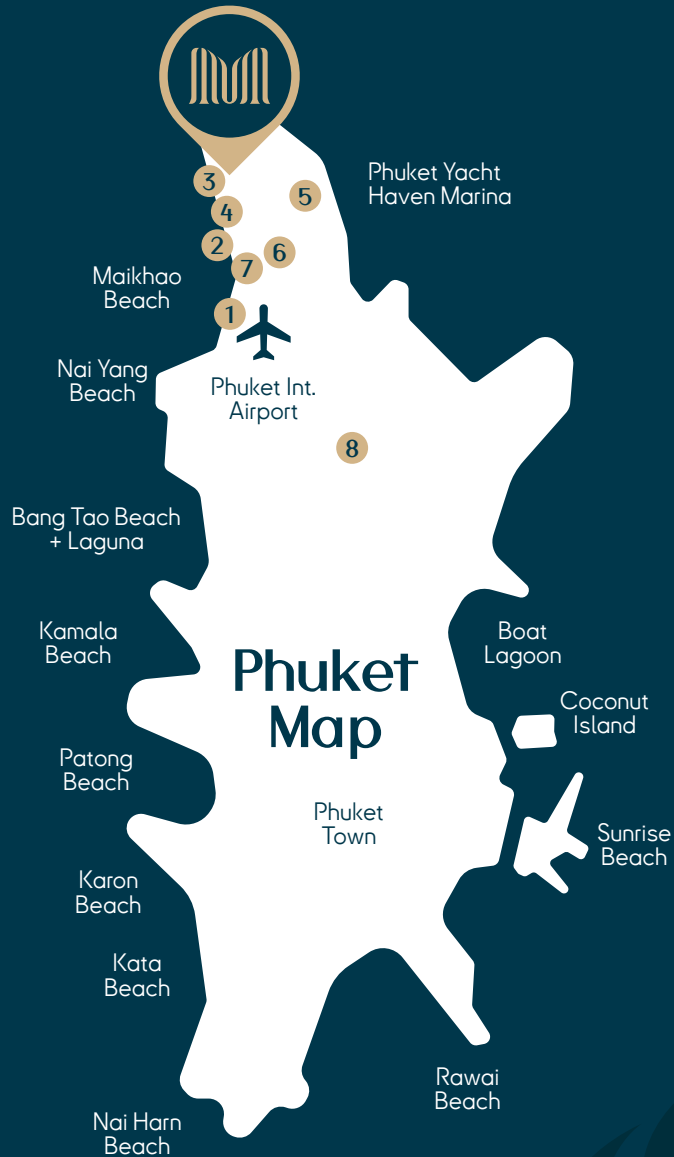


Concierge Service



24 Hours Security

# LOCATION



**1** Phuket International Airport  
16 km, 18 mins



**2** Mai Khao Beach  
50 m, 1 min



**3** Shopping Complex - Turtle village  
2.4 km, 5 mins



**4** M Beach Club  
4 km, 9 mins



**5** Phuket Yacht Haven Marina  
11 km, 14 mins



**6** Bumrungrad Hospital  
13 km, 14 mins



**7** Blue Canyon Country Club  
14 km, 16 mins



**8** UWC International School  
21.2 km, 24 mins



# MASTER PLAN





Land Boundary Line

50 M. To Beach

Land Boundary Line

# LAYOUT PLAN



Residence

# BUILDING J

2/3 Bedroom

The images shown are for illustration purposes only and may not be an exact representation of the product.



The images shown are for illustration purposes only and may not be an exact representation of the product.



Effetto color chic per questa composizione che sposa i gusti del momento.  
La sovrapposizione delle pedane in laccato vinaccia e pance opaci  
mensole porta-COVID in laccato vinaccia opaco e impraesita dalla luce integrata  
A chic colour effect for this arrangement that suits contemporary tastes.  
The COVID shelf in matt burgundy lacquer is enriched by an integrated light.

Anta legno luminosa finitura reverse sbiancato  
bleached oak finish luminous wood door  
von innen beleuchtete holztaur in ausführung gebleichte eiche



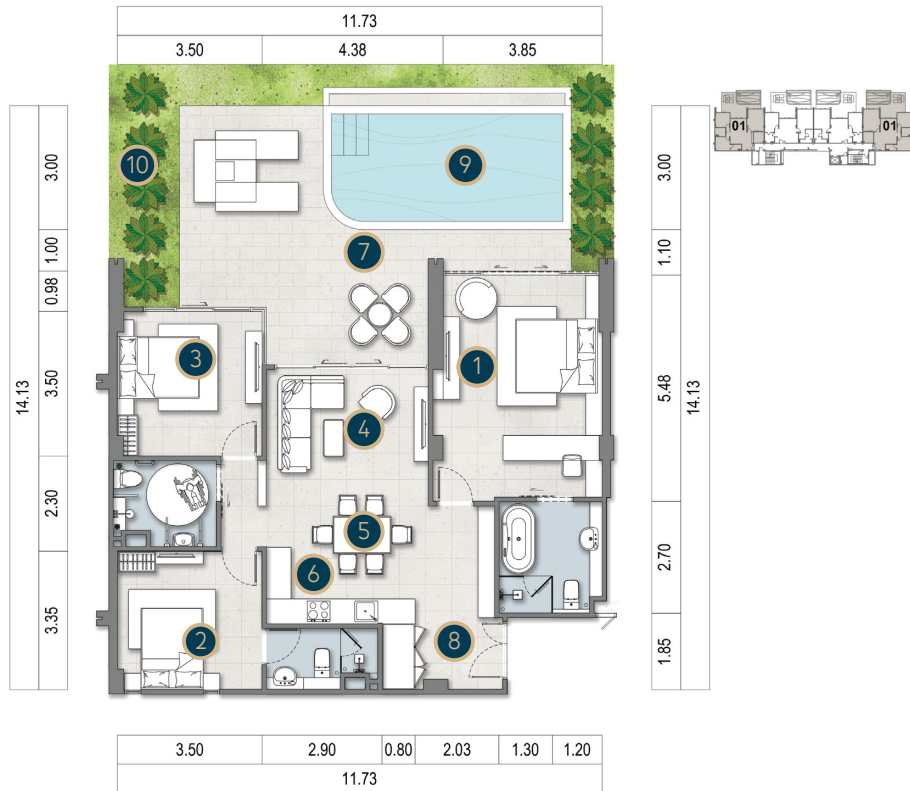
The images shown are for illustration purposes only and may not be an exact representation of the product.



Residence

# BUILDING J1/J2

## TYPE A

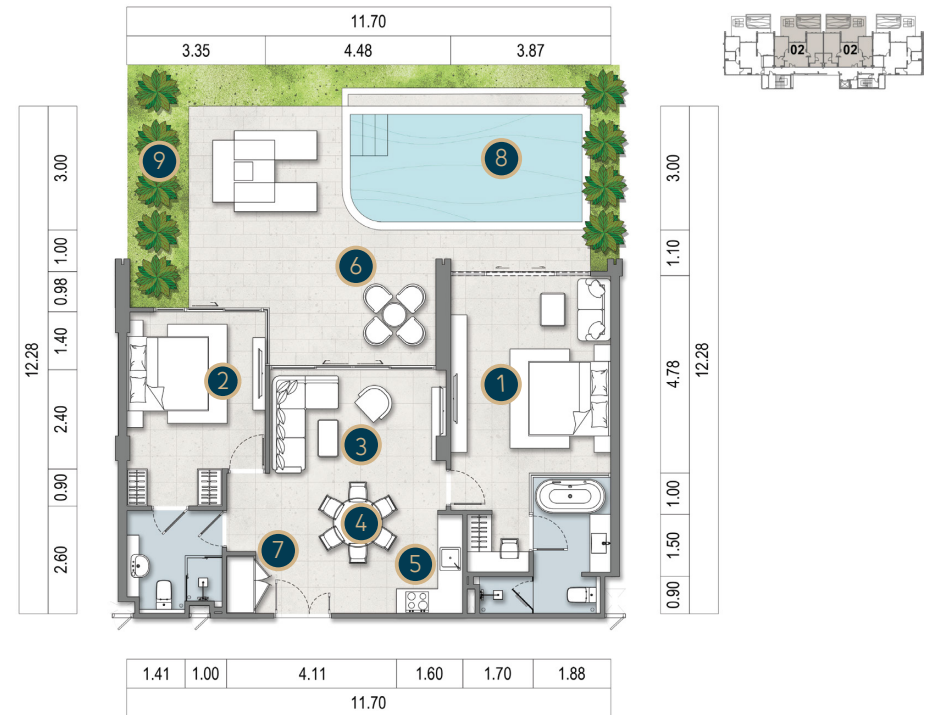


### 1ST FLOOR PLAN

- 1 Master Bedroom
- 2 Bedroom 1
- 3 Bedroom 2
- 4 Living Area
- 5 Dining Area
- 6 Kitchen Area
- 7 Terrace
- 8 Store
- 9 Pool
- 10 Garden

OUTSIDE 65.68 sq.m.  
 INSIDE 100.88 sq.m.  
**TOTAL 166.56 sq.m.**

## TYPE B



### 1ST FLOOR PLAN

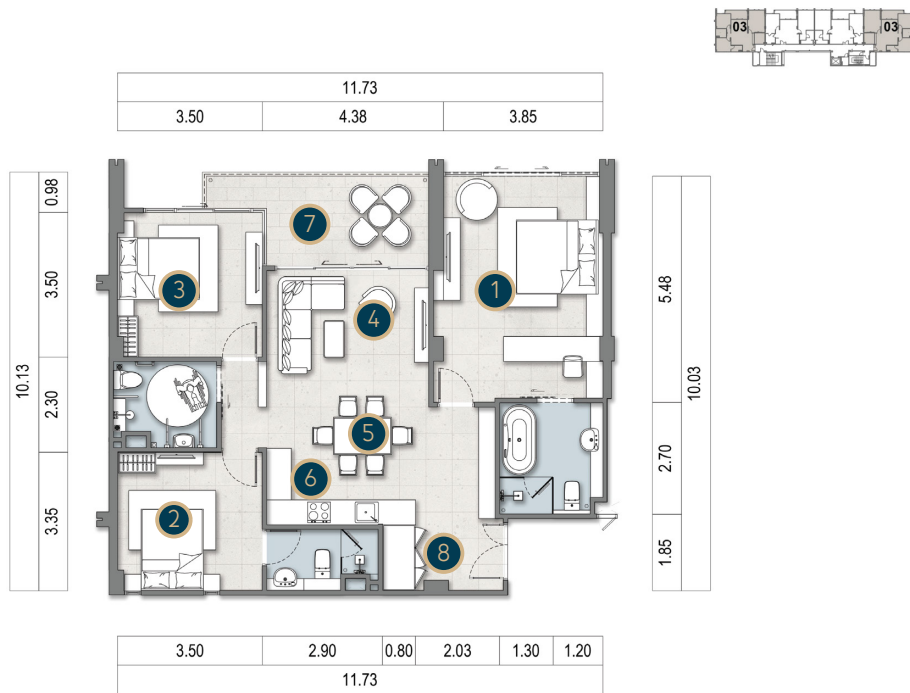
- 1 Master Bedroom
- 2 Bedroom 1
- 3 Living Area
- 4 Dining Area
- 5 Kitchen Area
- 6 Terrace
- 7 Store
- 8 Pool
- 9 Garden

OUTSIDE 67.06 sq.m.  
 INSIDE 83.72 sq.m.  
**TOTAL 150.78 sq.m.**

Residence

# BUILDING J1/J2

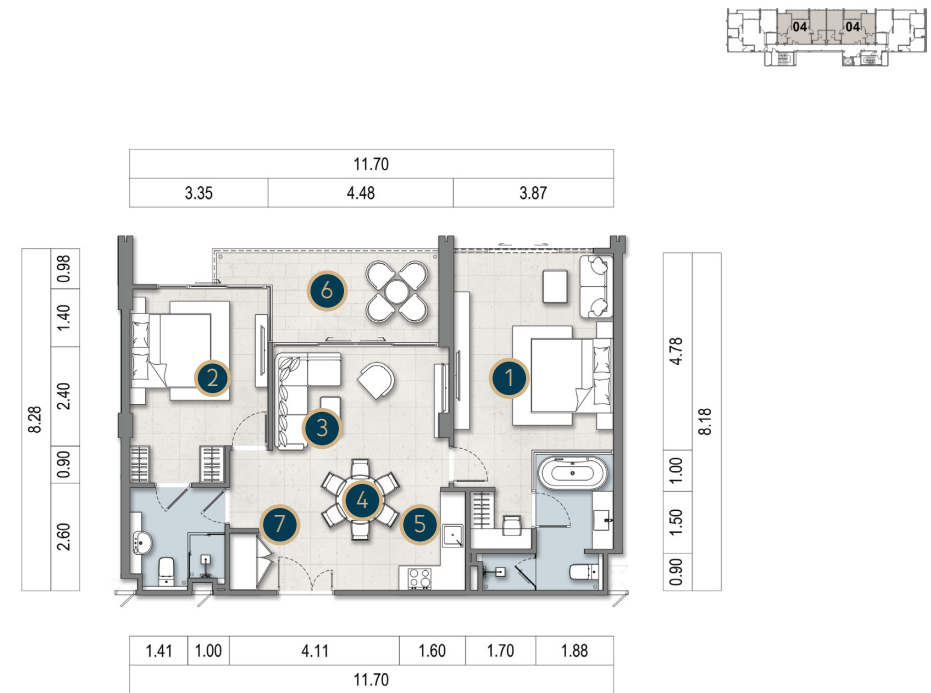
## TYPE C



### 2ND – 4TH FLOOR PLAN

1 Master Bedroom	5 Dining Area	OUTSIDE	10.29 sq.m.
2 Bedroom 1	6 Kitchen Area	INSIDE	100.88 sq.m.
3 Bedroom 2	7 Terrace	<b>TOTAL</b>	<b>111.17 sq.m.</b>
4 Living Area	8 Store		

## TYPE D



### 2ND – 4TH FLOOR PLAN

1 Master Bedroom	5 Kitchen Area	OUTSIDE	10.42 sq.m.
2 Bedroom 1	6 Terrace	INSIDE	83.72 sq.m.
3 Living Area	7 Store	<b>TOTAL</b>	<b>94.14 sq.m.</b>
4 Dining Area			



Residence

# BUILDING K

1 Bedroom

The images shown are for illustration purposes only and may not be an exact representation of the product.



The images shown are for illustration purposes only and may not be an exact representation of the product.



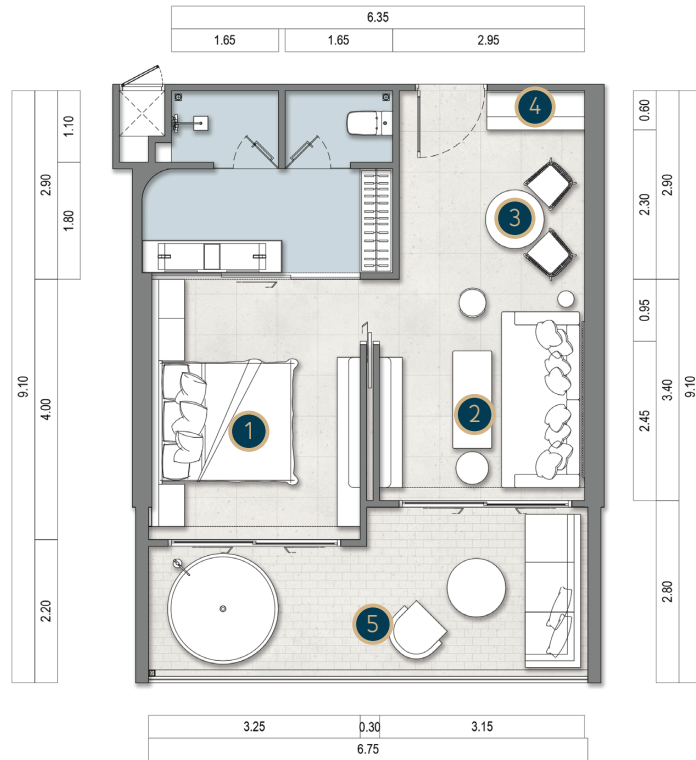
The images shown are for illustration purposes only and may not be an exact representation of the product.



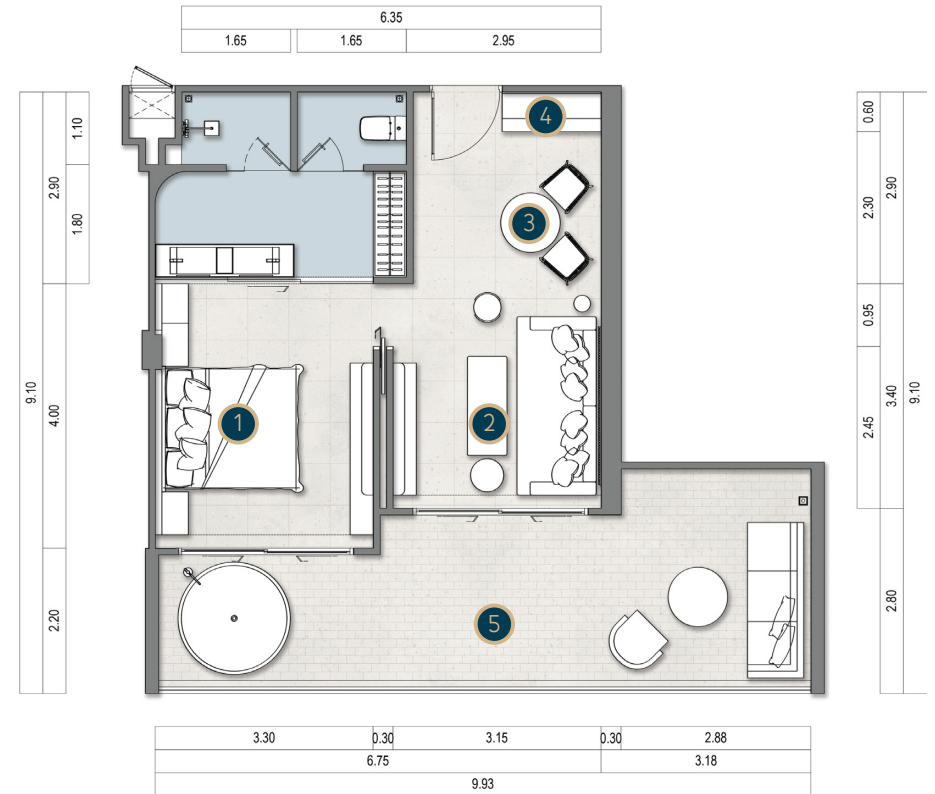
The images shown are for illustration purposes only and may not be an exact representation of the product.

# BUILDING K1/K2

## TYPE A



## TYPE B



- 1 Bedroom
- 2 Living Area
- 3 Dining Area
- 4 Pantry Area
- 5 Terrace

<b>AREA</b>	
INSIDE	46.49 sq.m.
OUTSIDE	17.44 sq.m.
<b>TOTAL</b>	<b>63.93 sq.m.</b>

- 1 Bedroom
- 2 Living Area
- 3 Dining Area
- 4 Pantry Area
- 5 Terrace

<b>AREA</b>	
INSIDE	46.49 sq.m.
OUTSIDE	28.39 sq.m.
<b>TOTAL</b>	<b>74.88 sq.m.</b>

Note: All dimensions are estimates only and may not be exact measurements. Square Meters are approximate. Floor Plan are subject to change.  
The plans are proposed only and the developer reserves the right to modify, revise or withdraw any or all of the same in their sole discretion and without prior notice.

# DEVELOPER PROFILE

The Nganthavee family has been in Phuket for over a century and is one of the biggest landlords in Phuket. We have extensive experience in developing various projects, from tin mining, rubber, and palm oil plantations to franchise management, cement factories, property development, hotel management, and many more, in the southern part of Thailand.



**Kawee  
Nganthavee**

**Experience:**

- Palm oil and rubber plantation
- Managing Director of a 5-star hotel, Layantara resort (pool villa)



**Krittamet  
Nganthavee**

**Experience:**

- Investment Banker at Maybank PCL
- M&A Specialist at Gulf PCL



**Korakrit  
Nganthavee**

**Experience:**

- Director of RIU Mai Khao Ltd., a 5-star hotel development in Phuket
- Finance Manager at Olam Venture Ltd.
- Debt Capital Market Executive at Kasikorn Bank PCL

# PROJECT/OPERATIONS CONSULTANT



**Alan M  
Thomas**

Alan is an experienced international hotelier having managed in a diverse portfolio of hotels who firmly believes that long term success is built upon the solid foundations of a quality product, development of people, with a strong emphasis on correct service ethic, while maintaining a keen focus on delivering and exceeding both customer and owner expectations.

## **Experience:**

- Having trained under the Savoy Hotel Group Management Training Scheme, he has gained over 40 years experience in the hotel industry since 1980, with over 12 years experience as a GM and 10 years experience as a managing director for a number of international hotels brands.
- International experience gained in the United Kingdom, Europe, United States, Asia including Hongkong, Thailand, Maldives.
- Gaining work experience in a range of international hotels and resorts from 4-star deluxe hotels to 6-star resorts including The Savoy Hotel Group, Mandarin Oriental Hotel Group, Forte Hotels, IHG (Franchise) and Six Senses Resorts & Spas.

# DIRECTOR OF SALES



**Pieter  
Willaert**

With over 25 years of experience, Pieter began as a Publisher for leading travel trade publications in Belgium & Luxemburg, Travel Magazine, and built his career path to Group Director of Sales & Marketing for a Thai hotel group with hotels in Thailand and Laos. A veteran in Southeast Asia with a stronghold in connections, Pieter is a crucial mechanism in development and sales.

## **Experience:**

- Over 25 years of experience in the travel industry for both online and offline channels.
- Founder of EPS Solution, which is actively overseeing 16 hotels with a combined key of over 1,000 rooms
- Director of Sales and Marketing at Burasari Hotels and Resort (2017-2020)
- Co-owner of Travel Magazine (1996-2018)

# ARCHITECTURE PROFILE



## Vissanu Sangsiri

TIME Architecture Co.,Ltd.

Mr. Vissanu has an extensive background in the architecture business and over 27 years of experience in southern Thailand, especially Phuket. His design strikes the perfect balance between nature, architecture, and humans, with noteworthy projects such as La Flora Resort and Spa, La Vela, Chamber Chers, and many more.

### Experience:

- Started working in an architecture firm in 1997, responsible for hotels, resorts, and other hospitality projects, Vissanu has over 27 years of design experience, especially in Phuket.
- Founded Time Architecture in 2010, specialising in architecture work, interior design and other related design, and has completed design work for over 30 large scale projects with each project value worth over a billion bath
- Appointed as Senior professional architect of the Architect Council of Thailand (ACT) in 2013



MAVISTON  
MAI KHAO

# WORLD-CLASS SPA DESTINATION BY BURASARI



*This is to certify that*

**SPA Burasari**

*is hereby declared the*

**2020**

**Luxury Spa Group**

Reginal Winner: South East Asia

## **Winner - World Luxury Spa Award**

"Luxury Boutique spa"  
2016, 2017, 2019, 2020

## **Spa Burasari, Phuket**

Top 3 Spa in Patong 2010-2017  
Winner Certificate of Excellence, 2010-2016

## **Burasari Phuket**

Award - World Luxury Spa Country Award  
Winner of Country Award for Luxury Boutique Spa, 2016 -2017

## **Winner - World Luxury Spa country Award 2016**

"Luxury Boutique spa"

## **Spa Burasari, Luang Prabang**

Ranked No. 1 Spa in Luang Prabang  
Winner of Certificate of Excellence, 2014-2016





MAVISTON

MAI KHAO