

# D'CHATEAU

KATHU - PHUKET, THAILAND



*Tropical Modern Luxury Villas*



D'CHATEAU

## DEVELOPER

**De Sol Property Co., Ltd.** is a well-established real estate developer with over a decade of experience in the industry. The company has successfully developed a range of residential projects under the DE NICHE brand across prime locations in Phuket, including Bangjo, Bangwad, Bang Sheelao, Rassada, Koh Sirey, Pasak, and Kathu.

With a strong foundation in quality construction and thoughtful design, De Sol Property is committed to creating homes that meet real living needs while delivering long-term value to homeowners and investors alike.

**MR. CHANAT  
SUKSAMO**

**MS. KANISSORN  
PUMDUANG**



## PORTFOLIO DE NICHE





## ABOUT PROJECT

Developer:	De Sol Property Co., Ltd.
Location:	Kathu, Phuket – Thailand
Land Area:	4-0-0.07 Rai
Design Concept:	Modern Tropical
Project Type:	2 Storey Private Pool Villa
Total Unit:	15 Villas (2 Phases)
Bedroom:	4 Bedrooms 4 Bathrooms
Parking Space:	3 Car Parking Spaces
Land Plot:	321.20 – 656 sq. m.
Usable Area:	330 sq. m.
Starting Price:	19.9 Million Baht
Furniture Package:	2.5 Million Baht
Sinking Fund:	100,000 THB
Common Area Fee:	THB 40.-/sq.wah/month

## DESIGN CONCEPT



MODERN TROPICAL  
DESIGN

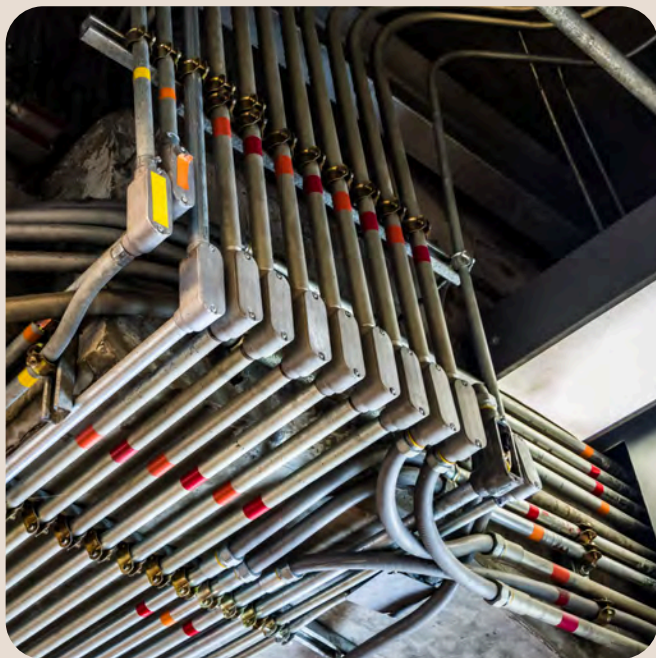


SPACIOUS  
LAYOUT



ULTIMATE  
PRIVACY

## GREEN CONCEPT



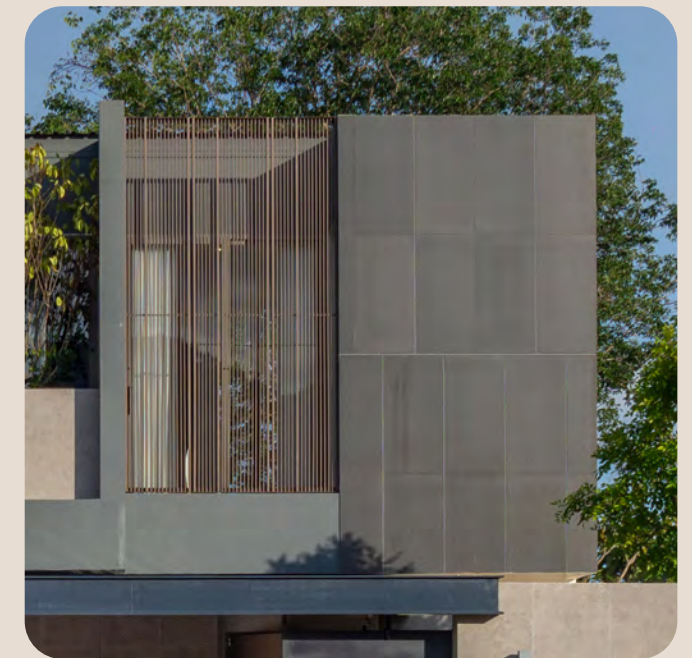
UNDERGROUND  
& CABLE SYSTEM



EV-CHARGER  
SUPPORT



HOME AUTOMATION  
SYSTEM



GREEN CONCEPT  
MATERIAL



**D'CHATEAU**  
KATHU - PHUKET



**SHOPPING**

- Makro Department Store 7 km./14 min.
- Lotus Department Store 7 km./16 min.
- Central Festival Phuket 8.6 km./16 min.



**GOLF COURSE**

- Red Mountain Golf Course 1.9 km./5 min.
- Phuket Country Club Golf Course 6.5 km./13 min.



**SCHOOL/UNIVERSITY**

- Prince of Songkhla University 6.5 km./15 min.
- Kajohnkiet International School 7 km./14 min.
- QSI International School 7.2 km./15 min.
- HeadStart International School 8 km./17 min.
- British International School 19.1 km./36 min.



**HOSPITAL**

- Bangkok International Hospital 8 km./18 min.
- Bangkok Siriroj International Hospital 7.2 km./13 min.



**PATONG BEACH**

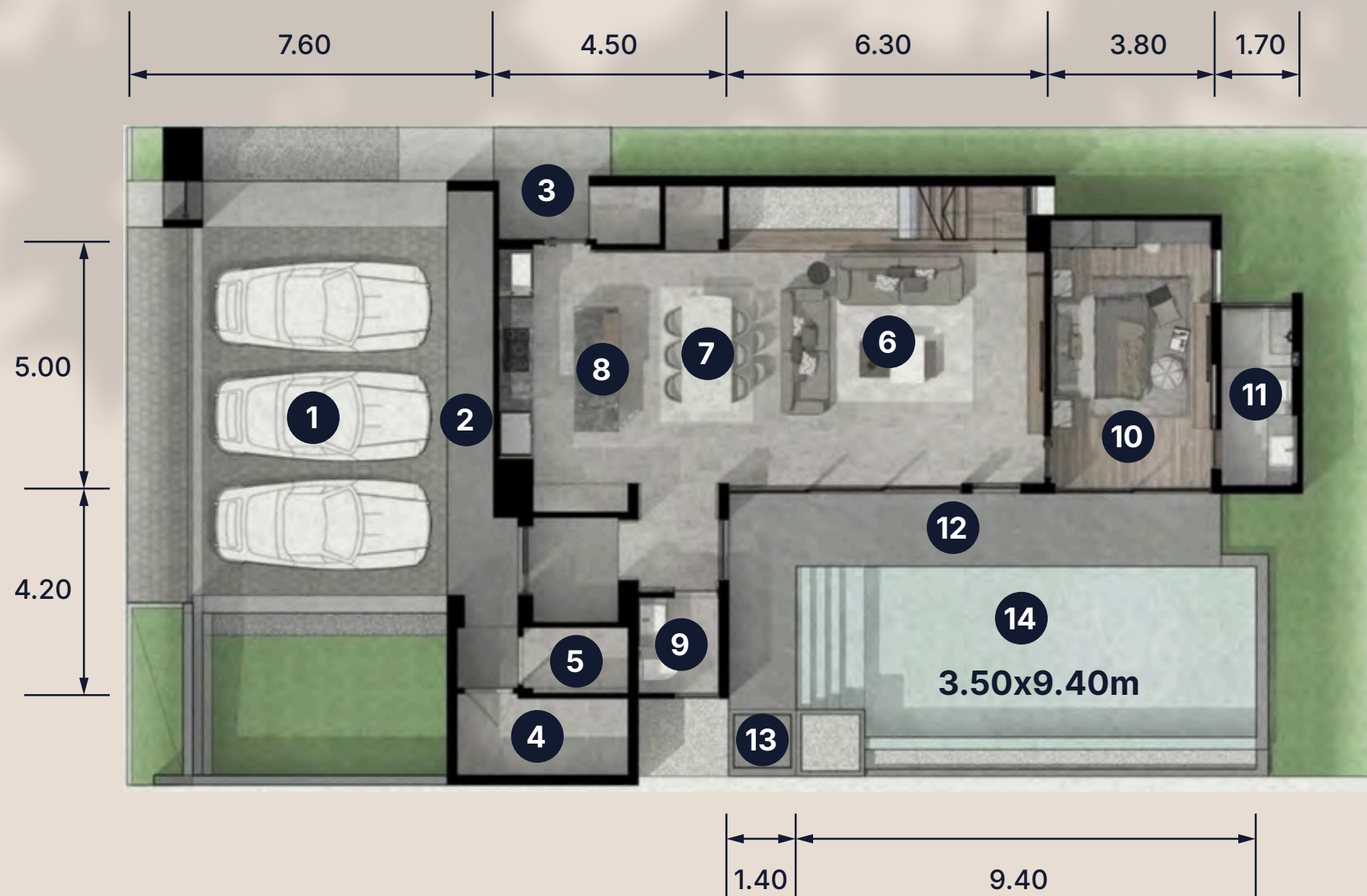
8.9 km./22 min.



**PHUKET INTERNATIONAL AIRPORT**

38.4 km./49 min.





## FLOOR PLAN 1<sup>st</sup> TYPE A

1. GARAGE	55.50	sq. m.
2. CORRIDOR	20.00	sq. m.
3. LAUNDRY	9.30	sq. m.
4. PUMP ROOM	7.70	sq. m.
5. STORE	3.30	sq. m.
6. LIVING AREA		
7. DINING		
8. KITCHEN	66.00	sq. m.
9. POWDER ROOM	3.70	sq. m.
10. BEDROOM 4	20.50	sq. m.
11. BATHROOM 3	6.40	sq. m.
12. POOL DECK 1	9.15	sq. m.
13. OUTDOOR SHOWER	1.90	sq. m.
14. SWIMMING POOL	32.00	sq. m.
<b>TOTAL</b>	<b>213.45</b>	<b>sq. m.</b>



## FLOOR PLAN 2<sup>nd</sup> TYPE A

1. MASTER BEDROOM	20.60	sq. m.
2. WALK-IN CLOSET	16.50	sq. m.
3. BATHROOM 1	14.40	sq. m.
4. BEDROOM 2	13.60	sq. m.
5. BEDROOM 3	19.40	sq. m.
6. BATHROOM 2	7.50	sq. m.
7. FAMILIY AREA	21.20	sq. m.
8. BALCONY	66.00	sq. m.
<b>TOTAL</b>	<b>119.85</b>	<b>sq. m.</b>

# CONSTRUCTION COMPANY

Chanthane Engineering Limited Partnership

---

## PORTFOLIO

- NATTAKAMOL PROJECT
- PROJECT F
- CASA RIVIERA
- CASA SIGNATURE
- DE NICHE
- DE CHATEAU





D'CHATEAU



D'CHATEAU



D'CHATEAU



  
D'GATEAU





D'CHATEAU



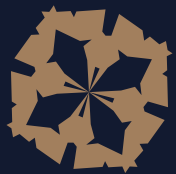
D'GATEAU



D'CHATEAU





D'CHATEAU



D'CHATEAU

*Tropical Modern Luxury Villas*

  +66 87 577 0888, +66 61 878 2995

 [www.desolproperty.com](http://www.desolproperty.com)

---

Project owner: De Sol Property Co., Ltd. Registration number 0835561005521, location 88/57 Moo 2, Koh Kaew Sub-district, Muang Phuket District, Phuket Province 83000.

Managing Director: Mr. Chanut Suksamo and Ms. Kanissorn Pumdaung, registered capital 1,000,000 THB.

D'Chateau Project, location: Kathu Sub-district, Kathu District, Phuket Province. Project AREA: 4 Rai 70 Square Wah, Land Title Deed Number 8469. Land with liabilities to Bank of Ayudhya Public Company Limited. Construction starts in April 2024.

The images are simulations, information and details in the document may subject to change without prior notice.