



TERRA  AZALEA
PHUKET, THAILAND



Our Website

MODERN LUXURY

/concept

*Azalea Terra envisions a harmonious blend of nature, family, and luxury living in the heart of Phuket. Inspired by the island's ever-changing rhythm, we strive to create a sanctuary of **stability and comfort** — a place where families thrive, connections deepen, and the beauty of tropical living is seamlessly woven into everyday life.*

*Whether as a cherished **home or a valuable investment**, Terra Azalea is committed to offering timeless residences that embrace the essence of island living.*



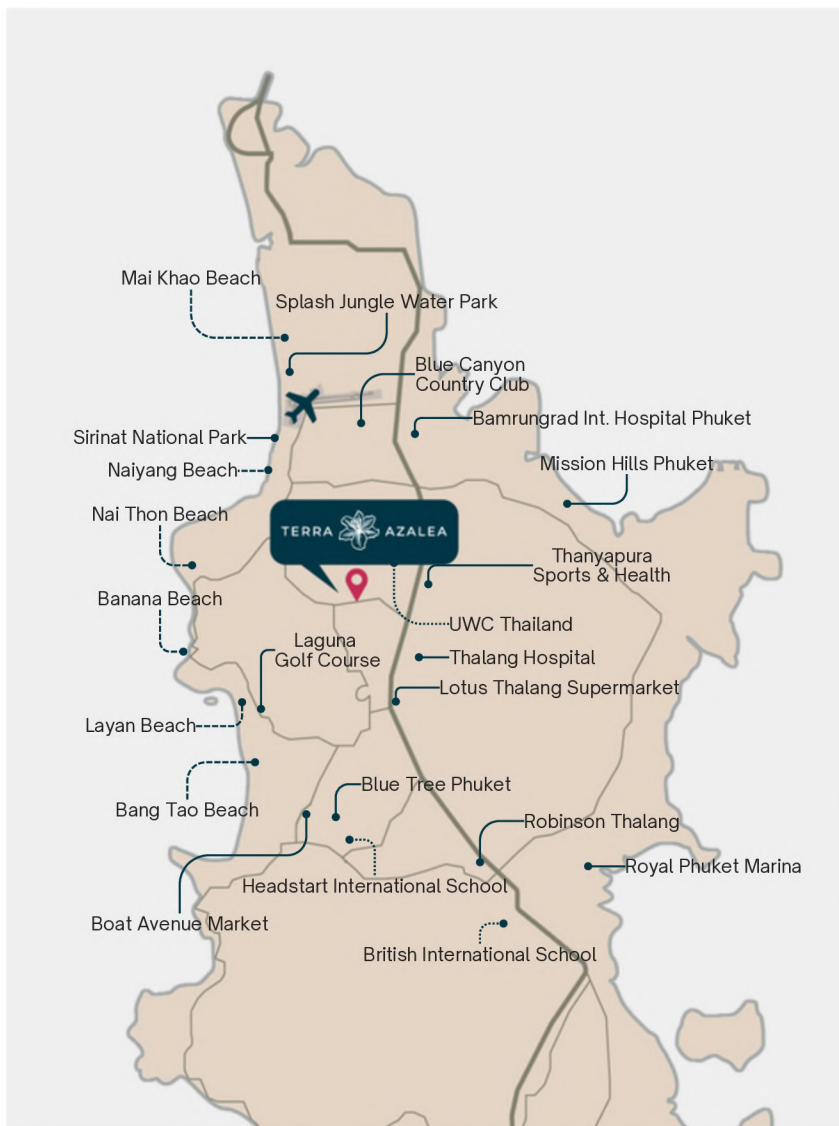
From
21.5 Million
Baht

Rendered images are for visualization purposes and may not reflect the final design.

CONVENIENT ACCESS

/location

Experience modern living with premium amenities right at your fingertips. Nestled among lush forests and rolling hills, enjoy a relaxed lifestyle that still offers all the comforts you value.



BEACHES

- Nai Thon Beach, 8km
- Naiyang Beach, 8km
- Layan Beach, 10km
- Banana Beach, 11km
- Bangtao Beach, 12km
- Mai Khao Beach, 14km

ACTIVITIES IN NATURE

- Thanyapura Sports & Health, 5km
- Sirinat National Park, 8km
- Blue Canyon Country Club, 9km
- Mission Hills Phuket Golf Resort, 9km
- Blue Tree Phuket, 11km
- Laguna Golf Course, 12km
- Splash Jungle Water Park, 13km
- Royal Phuket Marina, 16km

HOSPITALS

- Bamrungrad Int. Hospital Phuket, 5km
- Thalang Hospital, 6km

SHOPPING & FOOD

- Lotus Thalang Supermarket, 6km
- Tops Daily Supermarket, 10km
- Boat Avenue Market, 10km
- Robinson Thalang, 12km

AIRPORT

- Phuket International Airport, 8km

INTERNATIONAL SCHOOLS

- UWC Thailand, 5km
- Headstart International School, 11km
- British International School, 16km



Scan to Explore

LIVING & DINING

Experience **seamless indoor-outdoor living** at Terra Azalea. The open-plan kitchen and dining area flow effortlessly, creating a **bright and inviting space**—perfect for family gatherings.

Expansive Views & Natural Light

Expansive floor-to-ceiling sliding doors blur the lines between inside and out, welcoming in natural light and tropical breezes.

Versatile Spaces for Every Occasion

Whether it's an intimate dinner or a lively celebration, the versatile ground floor adapts beautifully, offering a stunning setting for both small gatherings and grand soirées.





MASTER SUITE

The **Master Suite** is a spacious retreat designed for comfort and functionality. A **plush king-size bed** ensures restful nights, while the **living area with a sofa** provides a cozy space to unwind.

The **ensuite bathroom** features a **soaking tub**, **walk-in shower**, and **wrap-around balcony**, creating a perfect blend of luxury and relaxation.





JUNIOR SUITE

The **Junior Suite** offers a flexible and elegantly designed space, perfect for guests, family members, or personal retreat.

Featuring an **ensuite bathroom**, it offers both comfort and privacy, making it perfect for visitors or everyday living.



CHILDREN'S SUITE

Designed for both **comfort and practicality**, providing a cozy yet functional retreat for young residents. Two **plush twin beds** ensure restful sleep, while **dual wardrobes** offer ample storage for clothes and essentials.

The **ensuite bathroom** features a **walk-in shower and modern fixtures**, creating a space that is both stylish and convenient for daily routines.



MASTER PLAN

A private, thoughtfully designed community of just six exclusive villas, where modern comfort meets natural beauty.

Step inside your **bright, open villa**, where every detail is crafted for **convenience and ease**.

- **Fully equipped** kitchens, closets, bathrooms, and lighting eliminate the hassle of upgrades.
- **Two outdoor** areas provide space to relax and spend quality time with loved ones.



Elevated Family Living, Inspired by Phuket's Beauty

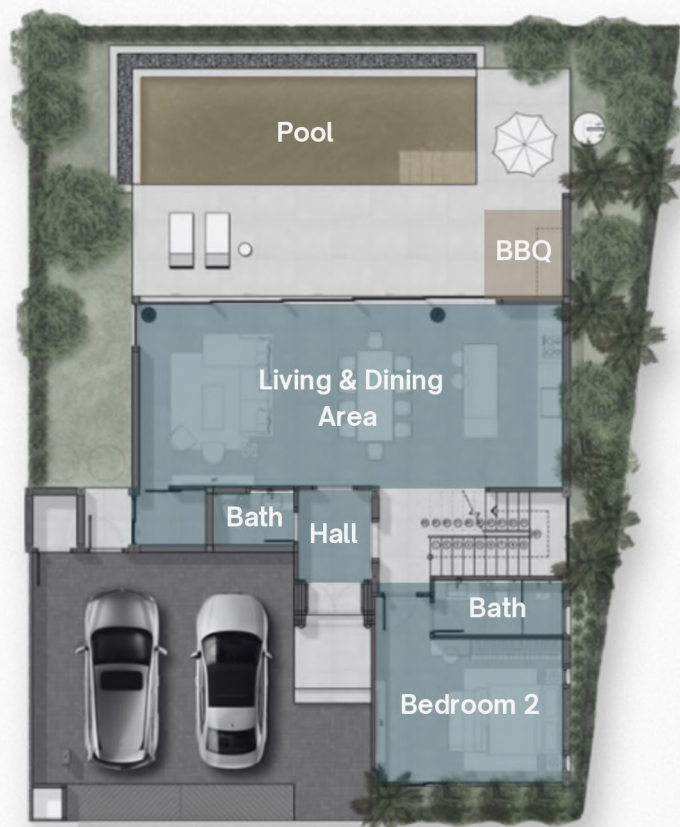


VILLA 1

4 Bedroom Pool Villa

Plot Size	352 m ²
Interior Area	235 m ²
Exterior Area	237 m ²
Total Build Up Area	472 m²

Rendered images are for visualization purposes and may not reflect the final design.



LOWER FLOOR

- Parking, Hall, Living & Dining Area
- Kitchen, Washroom, Laundry, Bedroom 2 (with En suite Washroom)
- Outdoor: Pool Deck, BBQ, Garden, Swimming Pool



UPPER FLOOR

- Second Hall, Living Area, Terrace
- Master Bedroom (with Walk-in Closet & Master Washroom)
- Bedroom 3, Bedroom 4 (with En suite Washroom)

VILLA 2 - 4

4 Bedroom Pool Villa

Plot Size	363, 347, 365 m2
Interior Area	235 m2
Exterior Area	237 m2
Total Build Up Area	472 m2

Rendered images are for visualization purposes and may not reflect the final design.



LOWER FLOOR

- Parking, Hall, Living & Dining Area
- Kitchen, Washroom, Laundry, Bedroom 2 (with En suite Washroom)
- Outdoor: Pool Deck, BBQ, Garden, Swimming Pool



UPPER FLOOR

- Second Hall, Living Area, Terrace
- Master Bedroom (with Walk-in Closet & Master Washroom)
- Bedroom 3, Bedroom 4 (with En suite Washroom)

VILLA 5

4 Bedroom Pool Villa

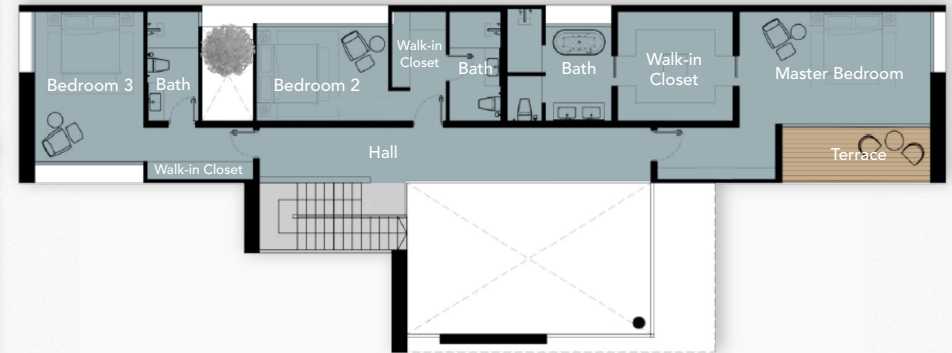
Plot Size	479 m ²
Interior Area	308 m ²
Exterior Area	133 m ²
Total Build Up Area	441 m²

Rendered images are for visualization purposes and may not reflect the final design.



LOWER FLOOR

- Parking, Hall, Living & Dining Area
- Kitchen, Washroom, Laundry, Bedroom 2 (with En suite Washroom)
- Outdoor: Pool Deck, BBQ, Garden, Swimming Pool



UPPER FLOOR

- Second Hall, Living Area, Terrace
- Master Bedroom (with Walk-in Closet & Master Washroom)
- Bedroom 3, Bedroom 4 (with En suite Washroom)

OUR PROJECT TEAM

Our trusted team brings experience, innovation, and craftsmanship to every project.



Original Fit-in Furniture.

A trusted name in fit-in furniture, serving over 1,200 customers annually with over 20 years of expertise in quality craftsmanship.



Known for durability and expert craftsmanship, MKS provides long-lasting roofing solutions that protect homes for years to come.



With 25+ years of experience, AE Phuket Construction is a trusted partner, delivering quality craftsmanship in every home.

OUR TRUSTED PARTNERS

We collaborate with the best in the industry to ensure exceptional quality.

HÄFELE

grafinger

พูนทอง

TOTO®

B·M·P
SYSTEM FURNITURE

Unearth The Magic In Every Moment



PAYMENT TERMS

Reservation Deposit (Upon signing the reservation agreement)	200,000 THB
Contract Signing (Within 30 days of reservation)	30%
1st Installment (Upon completion of foundation)	15%
2nd Installment (Upon completion of concrete structure)	15%
3rd Installment (Upon completion of walls & roof structure)	15%
4th Installment (Upon completion of floor tiles, wall finishes, and interiors)	15%
5th Installment (Upon transfer of ownership & handover)	10%

Essential Features Included

Move in with ease! Your villa price includes a private pool, lush landscaping, air conditioning, built-in wardrobes, and a fully equipped kitchen. Just bring your personal touch—furniture is not included.

Legal & Transfer Fees

Sales price does not include taxes and transfer fees. Taxes & transfer fees are split equally between the buyer and seller.

Details are subject to change without notice.

Enjoy hassle-free living with:

- 24/7 security for peace of mind
- Garbage collection & common area lighting
- Meticulous landscaping maintenance

All for a simple monthly fee of **THB 10,500** per 4-bedroom luxury villa.

Exclusive Ownership Contribution: A one-time THB 100,000 investment ensures the long-term beauty and value of your villa.